

# Panama

ENGLISH

## NAI International Conference

*Interpretation: Making a Difference in the Triple Bottom Line*

May 4–7, 2011 | [www.interpnet.com/ic](http://www.interpnet.com/ic)

Gamboia Rainforest Resort, Panama



NATIONAL ASSOCIATION FOR  
**INTERPRETATION**

P.O. Box 2246  
Fort Collins, CO 80522  
888-900-8283 toll-free  
970-484-8283  
970-484-8179 fax  
www.interpnet.com

## BOARD OF DIRECTORS

### Executive Committee

Jim Covell, President  
Amy Lethbridge, VP for Administration  
John C.F. Luzader, VP for Programs  
Amy Galperin, Secretary  
Theresa Coble, Treasurer

### At-Large Representatives

K.C. DenDooven  
David Knotts  
Mike Whatley

### Region Leadership Council Representatives

Linda Strand (Chair)  
Amy Ford  
John Miller  
Tom Mullin

### Section Leadership Council Representatives

Travis Williams (Chair)  
Todd Bridgewater  
Duane Fast  
Shea Lewis

## STAFF

Tim Merriman, Executive Director  
Lisa Brochu, Associate Director  
Paul Caputo, Art & Publications Director  
Jamie King, Membership Manager  
Deborah Tewell, Events Manager  
Beth Bartholomew, Business Manager  
Carrie Miller, Certification Program  
Specialist  
Lou Anderson, Administrative Assistant

**NAI's mission** is to inspire leadership and excellence to advance heritage interpretation as a profession.

**Interpretation** is a mission-based communication process that forges emotional and intellectual connections between the interests of the audience and the meanings inherent in the resource.

## Welcome to Panama!

On behalf of the Board of Directors I'm excited to welcome you all to NAI's 2011 International Conference in Panama. We have a few precious days together to share the current best practices in interpretation in a variety of countries. Even more important is the opportunity to renew friendships with valued colleagues from around the world.

As we gather together this year, the world is a different place. A global recession and natural disasters have made us realize that we are all vulnerable and our individual fates are all tied together. Political strife in many parts of the world has made us all more eager to understand the cultures and peoples of affected regions. Events that touch our fellow humans in far off places now touch the rest of us as well. Our world is truly shrinking.

That makes our work more important than ever before. Interpreters can help us understand the natural processes that impact our lives. Interpreters can connect us with a variety of cultures and add historical perspective to frame current events. Interpreters help us make meaning of the events that affect us and guide us to an understanding of how we may work together toward positive environmental outcomes through good stewardship.

Just as we have more to offer than ever before, interpreters must also work harder to maintain support for their programs. Shrinking government support pushes us toward operating more on a private business model. Increasingly rigorous evaluation is necessary to demonstrate the outcomes and value of our programs. These things strengthen our programs and profession in the long run and encourage us to continually hone our professional skills.

With these challenging times as a backdrop, we come together to celebrate and share our accomplishments, to support our profession and colleagues. The international community of interpreters is growing in strength and number as professional organizations spring up across Europe, Asia, and the Americas. There is an energy here, an energy that not only sustains our work but drives us forward. Thank you for devoting your time and resources to join us here at this conference and contributing to the energy, the growing conversation and the fellowship we all share. I look forward to talking with you during our time together.



Jim Covell  
President  
National Association for Interpretation

## Essential Information

### Emergency Phone Number

Contact the Gamboa Resort office at 507-206-8888.

### Where to Meet

All workshop events are held at the Gamboa Rainforest Resort unless otherwise noted. The gathering location for all off-site events will be the hotel lobby.

### Registration Desk

The conference registration desk is located near the meeting rooms. Hours are:

*Tuesday, May 3*  
3:00–7:00pm

*Wednesday, May 4*  
7:00–8:00am for preconference tour participants  
3:00–7:00pm for all other conference delegates

*Thursday, May 5*  
7:00am–4:00pm

*Friday, May 6*  
7:00–9:00am, 5:00–6:00pm

*Saturday, May 7*  
7:00am–3:00pm

The registration desk is the place to find information, directions, books for sale, and general assistance. Please stop by to say hello to NAI staff.

### Name Tags and Tickets

Pick up your name tag when you register and wear it to all events. It guarantees entrance to all workshop sessions. Meal tickets are required for all meal functions. Additional tickets are needed for off-site sessions. Separate tickets are needed for guests.

### Ticket Trading

To trade, sell, or buy a ticket to an off-site session, visit the registration desk and the ticket trader box.

### Auction Items

Drop off auction items at the registration desk before Thursday evening at 5:00pm. Items will be placed either in a silent auction or a live auction to be held Friday night.

### Information Table

If you have brochures or other information from your site or program, please bring them to the brochure table located near the registration desk.

### Lost and Found

Turn in any found items or reclaim lost items at the registration desk.

### Volunteers

If you'd like to volunteer to help with the conference in any way, please visit the registration desk. You will be given a job that suits your talents and availability.

### Vegetarian Meals

You were asked to designate your meal preference on your registration form. Your meal tickets indicate whether you have registered for vegetarian meals. If you did not designate vegetarian meals on your registration form, but need to do so, please inform NAI staff at the conference registration desk.

### Special Offers from the Hotel

Conference participants receive 15 percent off at the Gamboa spa. Also, internet is free in the lobby.

## Schedule at a Glance

### Tuesday, May 3

Registration opens at 3:00pm

### Wednesday, May 4

Registration available  
7:00–8:00am, 3:00–7:00pm

Preconference tour

Welcome reception

### Thursday, May 5

Registration open all day

Keynote Address: Sam Ham (USA)

Concurrent Sessions

Evening Special Event at BioMuseo

Breakfast, Lunch, Dinner included

### Friday, May 6

Registration open  
7:00–9:00am, 5:00–6:00pm

Off-site Sessions

Evening Dinner and Scholarship Auction

Keynote Address: Hernan Arauz (Panama)

Breakfast, Lunch, Dinner included

### Saturday, May 7

Registration open until 3:00pm

Concurrent Sessions

Closing Banquet

## Tuesday, May 3

### NAI Staff Arrives

*Throughout the Day*

### Registration

3:00–7:00pm

## Wednesday, May 4

### Registration

7:00–8:00am, 3:00–7:00pm

### Preconference Tour

*Departs promptly at 8:45am*

Please arrive at the hotel lobby not later than 8:30am to ensure an on-time departure. Participants will return to the hotel by 7:00pm. Bring sunscreen, hat, insect repellent, light raincoat, cameras, binoculars, cash for souvenirs.

### Opening Reception

7:00–9:00pm, *Piscina Las Cascadas*

Meet and greet your colleagues before heading out to dinner on your own. Aperitivos (appetizers) and a welcome drink will be provided.

## Thanks

Special thanks to our volunteers from Panama, whose help made this conference possible.

Reyna Carrillo	Margot López
Christian Gernez	Alvaro Perez
Rick Morales	Beatriz Schmitt
Zelesny Jiménez	Micaela Schmidt

## Thursday, May 5

### Registration

7:00am–4:00pm

### Breakfast

7:30–8:30am, *Los Guayacanes*

### Welcome

8:30–9:30am, *Los Guayacanes*

Remarks by Jim Covell, NAI President

### Keynote: Sam Ham

*See sidebar for details.*

### Morning Coffee Break

9:30–10:00am, *Foyer*

## Concurrent Sessions, Block 1

10:00–11:00am

### Bringing Back the Dead: Restoring a Forgotten History

*Camino de Cruces*

Witness the journey of a forgotten history from national park interpretive program to being featured in Ken Burns' film *The National Parks: America's Best Idea* and the Oprah Winfrey Show. (Shelton Johnson, USA)

### Another Change and Challenge

*Las Tucanes*

This session will address innovation of forest education programs for youth and infants in South Korea. (John H. Kim, Republic of Korea)

### Interpreting Water: Engaging Learners with the Natural World

*Las Garzas*

Sites with bodies of water can teach science and help people learn about the natural world. In this interactive session, learn activities you can use to teach about water. (Janet Nagale, USA)

### Development and Assessment of Innovative Teacher Training

*Las Jacarandas*

This session will show the national policy for environmental education in Japan, as well as the contents of an innovative program and its assessment, and how the program for teacher training should be. (Masakazu Goto, Japan)

## Sponsors and Partners

The NAI international conference would not be possible without the support of its sponsors and partners.

**BiOMUSEO**

***izone***  
*Built to Last*

## Concurrent Sessions

Thursday

	Camino de Cruces	Las Tucanes	Las Garzas	Las Jacarandas
1	Bringing Back the Dead: Restoring a Forgotten History	Another Change and Challenge	Interpreting Water: Engaging Learners with the Natural World	Development and Assessment of Innovative Teacher Training
2	iZone: Sign Materials for All Seasons	Intertribal Exchange	Sharing Nature with Hearing Impaired or Different Language Audiences	Application of Carrying Capacity Concept to Suncheon Bay Area
3	Interpretation By Design	The International Dimension in Training	Be a Word-Chopper: Less is More!	It's all Fun and Games Until Someone Learns



### KEYNOTE ADDRESS

**Sam H. Ham, Ph.D.**  
University of Idaho, USA

#### “Profound Experience and Interpretation—You can Make a Difference in the World”

Research and practical experience show that when visitors are provoked to do a lot of thinking about a place, they attach deep meanings to it—that is, the place becomes meaningful to them. Since meaningful places matter to us, we are likely to act in ways that support or defend them if given the opportunity to do so. In this way, orchestrating and delivering profound experiences is one of the pathways through which skilled interpreters can make a positive difference in the world. Stronger constituencies for conservation and protection of the world's special places can only result.

Dr. Sam Ham is director of the Center for International Training and Outreach and professor of communication psychology and international conservation in the University of Idaho's Department of Conservation Social Sciences. Sam is author of *Environmental Interpretation*, one of the world's leading texts on applied interpretation and is currently finishing the second edition which is titled, *Interpretation: A Guide for Making a Difference on Purpose*.

### Concurrent Sessions, Block 2

11:15am–12:00pm

#### Sign Materials for All Seasons

Camino de Cruces

iZone is the leading manufacturer of durable all weather signs using 100 percent recycled paper core. iZone provides printing, pressing, and finishing in one location for the best quality assurance and shortest lead times available in the market! Learn about the process and the product along with its applications in all kinds of weather. (David Glorioso, USA)

#### Intertribal Exchange: Interpretation and Cooperation Between Indigenous Cultures

Las Tucanes

This talk will present the results of a grass-roots cultural exchange experiment between members of three indigenous tribes in Panama, focusing on interpretation and sustainable tourism practices. (Rick Morales, Alvaro Perez, Salino García, Mateo Mecha, Igua Jimenez, Panama)

#### Sharing Nature with Hearing-Impaired or Different Language Audiences, Las Garzas

When you make your presentation accessible to persons with hearing loss, everyone in your audience will benefit. This session will encourage interpreters and educators to perform creative presentations, putting into practice exceptional teaching tips to share nature with deaf and hearing-impaired persons. (Noriema Gayle, Panama)

#### Application of Carrying Capacity Concept to Suncheon Bay Area

Las Jacarandas

Carrying capacity is the level of use that a renewable resource like Suncheon Bay can withstand and still remain productive. Where can we go from here? Can we interpret or educate people to protect Suncheon Bay? (Byung-gon Kim, Chul-hyun Koo, Dae-jong Lee, Republic of Korea)

#### Lunch

12:00–1:30pm

Los Guayacanes

**Concurrent Sessions, Block 3**  
1:30–3:30pm

**Interpretation By Design**  
*Camino de Cruces*

Nonpersonal media are often the first contact a potential visitor has with an interpretive site. Join NAI's art director for a discussion about using interpretive principles to make decisions about type, color, and imagery in design. (Paul Caputo, USA)

**The International Dimension in Training**

*Las Tucanes*

This session is a panel discussion exploring and evaluating models for high-quality international exchange, internship, and field school programs for students of cultural and environmental interpretation. (Amy Lethbridge, USA; Kye Joong Cho, Republic of Korea)

**Be a Word-Chopper: Less is More!**

*Las Garzas*

Learn how to say what you mean and mean what you say without emptying the dictionary onto a page or panel. Test your editing prowess and demonstrate your writing skills. (Michael Glen, Scotland)

**It's All Fun and Games Until Someone Learns**

*Las Jacarandas*

In this supercharged interactive session, we'll practice techniques used by storytellers, comedians, educators, and marketing agencies to effectively use humor, laughter, and play to deliver a program message. (Ian Signer, USA)

**Afternoon Refreshment Break**

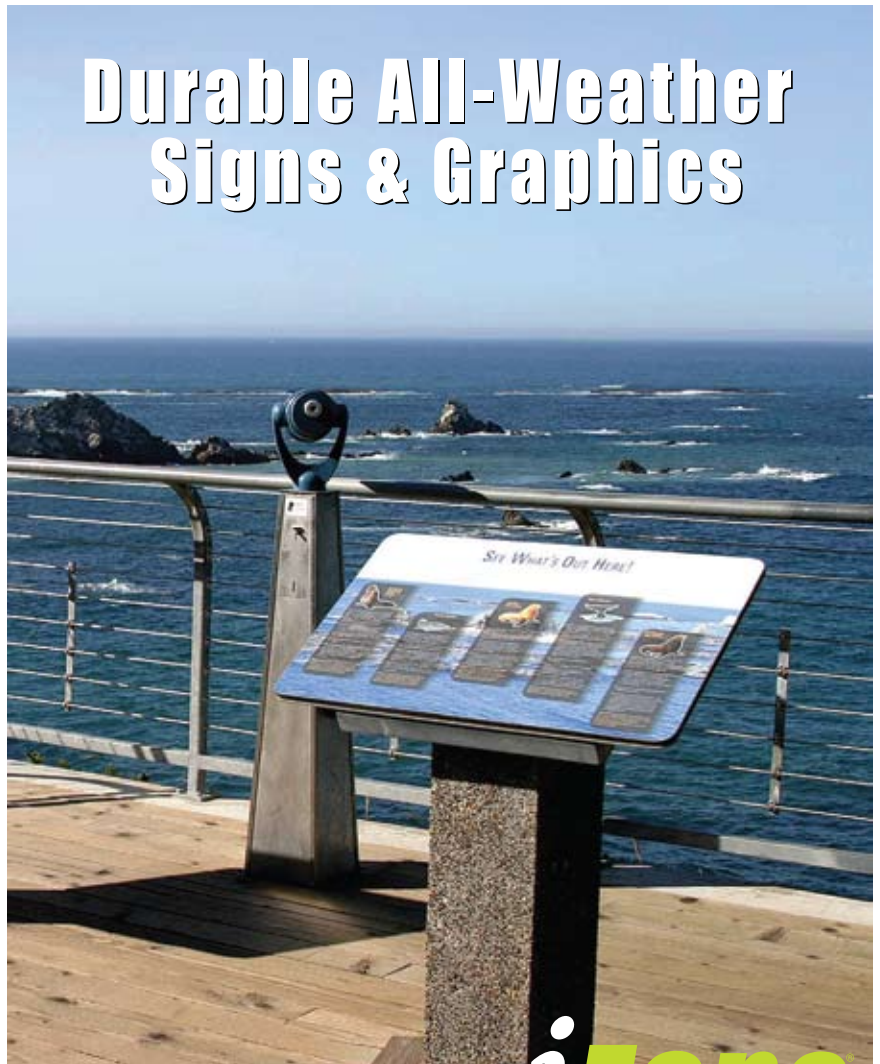
3:30–4:00pm, Foyer

**SPECIAL EVENT: BIOMUSEO**

*Meet in hotel lobby for a 4:30pm departure (transportation provided); Return to hotel by 10:30pm.*

Our group has been invited to spend the evening at the BioMuseo of Panama, where our hosts will be happy to answer questions about the museum's exhibit halls. With a full moon over the ocean, we will enjoy an open-air event on the grounds of the museum with a Caribbean flavor, featuring a light meal of local foods and live music. The buses will then take us to Casco Viejo for a look at the night life of Panama City. Dinner is included, but you will need some cash on hand if you would like to purchase any food, beverage, or other goods in Casco Viejo.

# Durable All-Weather Signs & Graphics



MADE OF 100% RECYCLED PAPER!

TEN YEAR WARRANTY!

**i**zone  
*Built to Last*

WWW.IZONEIMAGING.COM / 888-464-9663

Friday, May 6

### Registration

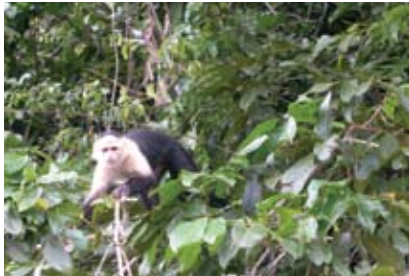
7:00–9:00am

### Breakfast

7:30–8:30am, *Los Guayacanes*

### Off-site Sessions

*Note: It is customary in Panama to tip your guides. Tips are not included in the price of the off-site sessions and are up to the individual to pay if desired.*



TIM MERRIMAN

### Jungle Boat Tour and Smithsonian's Barro Island

*Meet in the hotel lobby at 8:15am for an 8:30am departure.*

Bring binoculars, a camera, a hat, sunscreen, insect repellent, light clothing, a light raincoat, and closed shoes for a light hike in the rainforest. Bottled water and a picnic lunch are included.



TIM MERRIMAN

### Chagres River and Embera Indians

*Meet in the hotel lobby at 8:15am for an 8:30am departure.*

Bring sunscreen, comfortable clothing, sandals (Teva style), hat, insect repellent, light raincoat, binoculars, camera, cash for souvenirs and crafts, and a swim suit (there will be an opportunity to swim in the river). Return to hotel by 4:30pm. Lunch is included.



TOM FRIEDEL

### Soberania National Park, Pipeline Road, and The Rainforest Discovery Center

*Meet in the hotel lobby at 5:45am for a 6:00am departure (best wildlife viewing is early in the day).*

Bring walking shoes, sunscreen, hat, insect repellent, light raincoat, binoculars, camera. A to-go breakfast will be provided and lunch is included. Return to hotel by 3:00pm.

### Dinner and Silent Auction

6:30–7:30pm, *Los Guayacanes*

During and after dinner, you will have the opportunity to bid on auction items from around the world. To make a bid, simply sign the paper next to the item and write your bid (in US dollars). The highest bidder at the closing of the auction will win the item and can pick it up immediately after paying for it and any other items purchased in the live auction.

### Keynote: Hernan Arauz

7:30–8:00pm, *Los Guayacanes*  
*See sidebar.*

### Live Auction

8:00–9:00pm, *Los Guayacanes*

Be sure to attend the live auction and bid on the unique items brought from around the world. Proceeds from the auction support scholarships to the next international conference.



### KEYNOTE ADDRESS

#### Hernan Arauz

*Tour Guide, Panama*

#### “The Legacy of Amado Arauz and Reina Torres De Arauz: My Personal Motivation in Interpretation”

From a family of renowned scientists and explorers, Hernan Arauz's calling as a naturalist guide and interpreter emerged 20 years ago with the founding of Panama's first ecotourism business. His early expeditions into Panama's fabled Darien Gap, pioneering routes from the Caribbean Sea to Pacific Ocean, marked him as an extraordinary leader and expert naturalist, qualities that thousands of visitors to Panama have since enjoyed in his company.

Hernan has led tours for heads of state, royalty, TV stars, and the largest travel operators of the USA and Europe. Known not only as an expert generalist guide, Hernan has among his specialities bird watching, family programs, customized expeditions into Darien, the history of the Panama Canal, and the cultural history of Panama's UNESCO World Heritage Sites.

As a veteran of seven trans-Darien expeditions, countless other tours into Darien, and the son of Amado Arauz and the late Dr. Reina Torres de Arauz, Hernan has exploration in his blood.

## Saturday, May 7

### Registration

7:00am–6:00pm

### Breakfast

7:00–8:30am, *Los Guayacanes*

### Concurrent Sessions, Block 4

8:00–8:45am

#### **The Sphere of Interpretive Influence: Expanding the Boundaries of Nonpersonal Media, *Camino de Cruces***

Venture beyond the traditional interpretive realm. From guest rooms to lobbies, gift shops to cafes, incorporating interpretive themes into design can support your mission and your bottom line. (Jane Beattie and Chuck Lennox, USA)

#### **Historic Arocena House: Interpreting Business History from the North of Mexico, *Las Tucanes***

Historic Arocena House Museum interprets in-site and with an innovative approach the phenomena related to economy, politics, private life, and social mobility in Torreon (Mexico) during the period 1919–1936. (Adriana Gallegos, Mexico)

#### **TransPanama: A Trail Across Cultures and Landscapes**

*Las Garzas*

This presentation will discuss the opportunities and challenges of tracing a hiking trail through different territories, including the ancestral lands of various indigenous cultures with different cultural outlooks and values. (Miguel Esquivel, Panama)

#### **Creating Engaging Online Interpretation, *Las Jacarandas***

Through the use of proven storytelling and gaming techniques, learn how to reach audiences who may not be able to physically visit your location. (Vince Hellane, USA)

### Concurrent Sessions, Block 5

9:00–9:45am

#### **Cultural Rituals of Sacred Dang-san Forest**

*Camino de Cruces*

The forest used for Dang-san rituals were established by local residents several hundred years ago in Korea. They have been disturbed in various ways, but they still remain in many rural villages where Dang-san rituals are being held every year. The Cultural Heritage Administration (CHA) in Korea has designated several Dang-san forests as natural monuments. (Kye-Joong Cho, Republic of Korea)

#### **Way Beyond Darwin: Evolution of Human Consciousness and the Future of Interpretation**

*Las Tucanes*

Integralism traces worldviews since cultures emerged, allowing interpreters to know the most important universal themes and why interpretation germinated in modernism, how postmodernism transformed it, and what guides interpretation's future. (Jon Kohl, Costa Rica)

#### **An Effective Volunteer Program: The Ultimate Interpretive Tool**

*Las Garzas*

Explore the process of designing, implementing, and managing a successful interpretive volunteer program within a large multi-ethnic city in the U.S. (Juan-Carlos Solis, Mexico)

#### **Bridging Interpretation and Science Education in Punta Culebra Natural Center**

*Las Jacarandas*

It is a fact that school education is not anymore about teaching facts—instead it is about increasing curiosity, or lighting a spark. The interpretation philosophy is an invaluable resource to improve formal science education on natural centers, parks, museums, aquariums, etc. (Lidia Valenica, Panama)

### Morning Coffee Break

9:45–10:15am

### Concurrent Sessions, Block 6

10:15am–12:15pm

#### **Building an International Cooperation Framework**

*Las Tucanes*

Join NAI's International Section in building a strong international framework of interpretation professionals for the purpose of mutual assistance, sharing information, and collaborating on projects. (Duane Fast, Canada)

#### **Connecting Interpretation and Sustainability for Advocacy**

*Las Garzas*

Sustainability is a value that many tourism operations are adopting. Come and explore the fascinating role interpretation can play in connecting visitors to these new initiatives. (Chuck Lennox and Jane Beattie, USA)

#### **A Creative Way to Creating Interpretive Themes**

*Las Jacarandas*

This hands-on session provides the groundwork to easily develop themes for interpretive presentations and products. You will be led through a step-by-step process showing you a path to interpretive theme development. (Jeff Miller, USA)

Concurrent Sessions		Saturday		
Camino de Cruces	Las Tucanes	Las Garzas	Las Jacarandas	
4	The Sphere of Interpretive Influence	Historic Arocena House	TransPanama: A Trail Across Cultures and Landscapes	Creating Engaging Online Interpretation
5	Cultural Rituals of Sacred Dang-san Forest	Way Beyond Darwin	An Effective Volunteer Program: The Ultimate Interpretive Tool	Bridging Interpretation and Science Education in Punta Culebra Natural Center
6		Building an International Cooperation Framework	Connecting Interpretation and Sustainability for Advocacy	A Creative Way to Creating Interpretive Themes
7	Meet Panama	Interpretation Needs Champions!	The Cape Winelands Cultural Landscape of the Western Cape, South Africa	Connecting Cultural Interpretation to Sustainable Tourism
8	Civic Tourism and Creating Sense of Place	The Outer Limits of Interpretation	Coral Reef Interpretive Management and Conservation in Quiribri Island	A View of the Danish Nature Interpreter's Education
9	How to Make Change Bigger than Climate	Conserving the Craft of Fishing and Marine Resources in Chira, Costa Rica	Making Museums Relevant	Nature Centers: A Valuable Meeting Place in a Modern World

### Interpretation Needs Champions! *Las Tucanes*

Interpretation always seems to struggle for funding and support. If you're ready to change that perception, join in this discussion that aims to awaken the "interpretation champion" in us all. (Gail Richard and William Bevil, USA)

### The Cape Winelands Cultural Landscape of the Western Cape, South Africa

*Las Garzas*

The Cape Winelands Cultural Landscape is inscribed in the tentative list of World Heritage Sites with UNESCO. The paper reviews the identification of significant heritage resources in the landscape, using a number of specific constituent large valleys (all comprise wilderness, rural, and urban areas), and connects the findings to interpretations of the conflicts that arise between heritage resources management, on the one hand, and spatial development planning relative to a heterogeneous society, many sectors of which are in need of development, on the other. (Fabio Todeschini, Italy)

### Connecting Cultural Interpretation to Sustainable Tourism

*Las Jacarandas*

This presentation explores ways to apply interpretive strategies to tourism in order to better understand and present specific cultures and cultural processes. (Lucy Long, USA)

### Lunch, Los Guayacanes 12:15–1:30pm

### Concurrent Sessions, Block 7 1:30–2:15pm

#### Meet Panama: Challenges for Interpretive Planning in the Interoceanic Region

*Camino de Cruces*

This presentation examines the potential of interpretive planning through the Network of Visitors Centers and Museums of the Interoceanic Region to enrich visitor experience of Panama's natural and cultural heritage. (Charlotte Elton, Panama)

**Concurrent Sessions, Block 8**  
2:30–3:15pm

**Civic Tourism and Creating Sense of Place**

*Camino de Cruces*

This presentation discusses the relationships that help inform the interdependencies between civic tourism, community place building, and sustainable tourism businesses. (Diane Gaede and James Gould, USA)

**The Outer Limits of Interpretation: Exploring the Edges of the Interpretive Universe**

*Las Tucanes*

The interpretation of Mills and Tilden sprouted from within resource agencies like the U.S. National Park Service. Interpretation has escaped these boundaries, and this session will explore the ways that the discipline can bring important messages to the masses. (Ted Eubanks, USA)

**Coral Reef Interpretive Management and Conservation in Quiribri Island**

*Las Garzas*

Using GIS, limits of acceptable change, and the Water Recreation Opportunity Spectrum, we develop an interpretive and public use plan to conserve reefs and promote tourism in Limón, Costa Rica. (Natalia Barrantes Rojas and Marisol Mayorga, Costa Rica)

**A View of the Danish Nature Interpreter's Education**

*Las Jacarandas*

Students are trained in methods that involve, sensitize, and inspire the audience. This training includes areas such as tourism, citizen involvement, interpretation to children and adults, training of trainers, nature conservation, and cultural heritage. (Poul Seidler, Denmark)

**Afternoon Refreshment Break**  
3:15–3:45pm

**Concurrent Sessions, Block 9**  
3:45–4:30pm

**How to Make Change Bigger than Climate**

*Camino de Cruces*

The changing climate demands we change our perspective on how we interpret the situation. Behavior change is vital and sometimes what you don't say is what makes it happen. (Sarah-Mae Nelson, USA)

**Conserving the Craft of Fishing and Marine Resources in Chira, Costa Rica**

*Las Tucanes*

An interpretive marine tour is used to promote conservation and sustainable development among locals and visitors in a fishing community in Palito, Island of Chira, Costa Rica. (Maria José Rodríguez García and Marisol Mayorga, Costa Rica)

**Making Museums Relevant: Using Community Engagement to Address Social Issues**

*Las Garzas*

Museums are more than collections. Explore rationale, methods, and program examples that use engagement in planning, and use museum exhibits/programs to address social, environmental, and other complex contemporary issues. (Gail VanderStoep, USA)

**Nature Centers: A Valuable Meeting Place in a Modern World**

*Las Jacarandas*

Urban and suburban children need a safe, natural place to play, learn, and grow. This presentation will share how 1,500 nature centers in the U.S. develop and change to meet this challenge. (Tim Merriman, USA)



**SPECIAL EVENT**

**Closing Banquet**

6:00–9:00pm

NAI Executive Director Tim Merriman will provide closing remarks, followed by the banquet – a great time to connect with the people you've met during the conference. Join your colleagues and new friends for a relaxing and fun finale after days of hard work.

*Pictured: Jamie Cabral (left) and Amy Lethbridge of the Mountains Recreation Conservation Authority (USA) during the closing banquet at NAI 2010 International Conference in Australia.*

## Speakers

### **Hernan Arauz (Panama)**

Tour Guide

### **Jane Beattie (USA)**

Director of Interpretation and Environmental Sustainability, ARAMARK Parks and Destinations

### **William Bevil (USA)**

Certified Interpretive Guide

### **Paul Caputo (USA)**

Art & Publications Director, National Association for Interpretation

### **Kye-Joong Cho (Republic of Korea)**

Professor, Suncheon University

### **Charlotte Elton (Panama)**

Facilitator, Network of Visitors Centers and Museums of the Interoceanic Region

### **Miguel Esquivel (Panama)**

Founder/Director, TransPanama Foundation

### **Ted Eubanks (USA)**

Owner, Fermata

### **Duane Fast (Canada)**

NAI International Section Director, Artcraft

### **Diane Gaede (USA)**

Associate Professor, University of Northern Colorado

### **Adriana Gallegos (Mexico)**

Curator and Exhibitions Manager, Museo Arocena/Casa Historica Arocena

### **Salino García (Panama)**

Ngöbe, Community of Salt Creek, Isla Bastimentos, Bocas del Toro

### **Sam H. Ham (USA)**

Director, Center for International Training and Outreach; Professor, University of Idaho

### **Igua Jimenez (Panama)**

Kuna, Comarca de Madungandí

### **Maria Jose Rodriguez Garcia (Costa Rica)**

Student, University of Costa Rica

### **Noriema Gayle (Panama)**

Tour Guide and Professor, Universidad Especializada de las Americas

### **Michael Glen (Scotland)**

Jobbing Wordsmith, QuiteWrite

### **David Glorioso (USA)**

iZone

### **Masakazu Goto (Japan)**

Senior Researcher, National Institute for Education Policy Research

### **James Gould (USA)**

Assistant Professor, University of Northern Colorado

### **Vince Hellane (USA)**

President, D'Vinci Interactive

### **Shelton Johnson (USA)**

Park Ranger, National Park Service

### **Byung-gon Kim (Republic of Korea)**

Graduate Student, Suncheon National University

### **John H. Kim (Republic of Korea)**

Advisor, The Korea Forest Interpreter's Association

### **Jon Kohl (Costa Rica)**

Public Use Planning Coordinator, World Heritage Center/UNESCO

### **Chul-hyun Koo (Republic of Korea)**

Graduate Student, Suncheon National University

### **Dae-jong Lee (Republic of Korea)**

Graduate Student, Suncheon National University

### **Chuck Lennox (USA)**

Principal/Consultant, Cascade Interpretive Consulting LLC

### **Amy Lethbridge (USA)**

Deputy Director, Mountains Recreation and Conservation Authority

### **Lucy Long (USA)**

Instructor, Bowling Green State University

### **Marisol Mayorga (Costa Rica)**

Coordinator Environmental Interpretation Major, University of Costa Rica

### **Mateo Mecha (Panama)**

Emberá, Community of Emberá Drua, Alto Chagres

### **Tim Merriman (USA)**

Executive Director, National Association for Interpretation

### **Jeff Miller (USA)**

Tour Guide, California State Parks

### **Rick Morales (Panama)**

Trainer, Naturalist Guide

### **Janet Nagale (USA)**

4-H Agent, Oregon State University

### **Sarah-Mae Nelson (USA)**

Climate Change Interpretive Specialist, Monterey Bay Aquarium

### **Alvaro Perez (Panama)**

Environmental Consultant

### **Gail Richard (USA)**

Certified Interpretive Trainer; Director, Pacific Island Chapter, NAI Region 9

### **Natalia Barrantes Rojas (Costa Rica)**

Environmental Interpreter

### **Poul Seidler (Denmark)**

Course Manager/Consultant, Copenhagen University

### **Ian Signer (USA)**

Co-Founder, Intelligent Play

### **Juan-Carlos Solis (Mexico)**

Director of Education, WildCare

### **Fabio Todeschini (Italy/South Africa)**

Emeritus Professor, University of Cape Town

### **Lidia Valencia (Panama)**

Educational Specialist, Smithsonian Institution

### **Gail Vanderstoep (USA)**

Associate Professor, Michigan State University



# Hawaii

**2012 NAI International Conference**

[www.interpnet.com/ic](http://www.interpnet.com/ic)